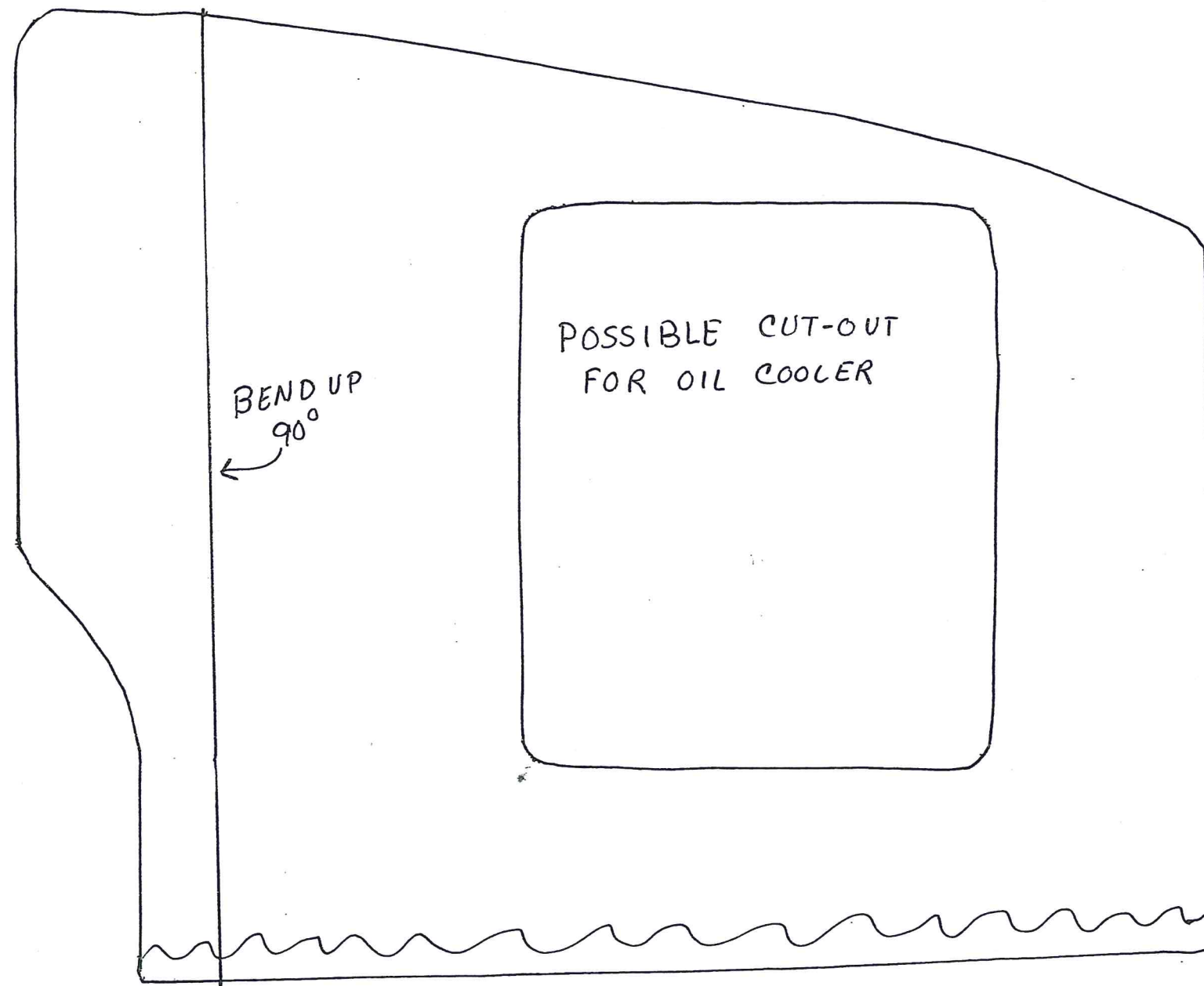
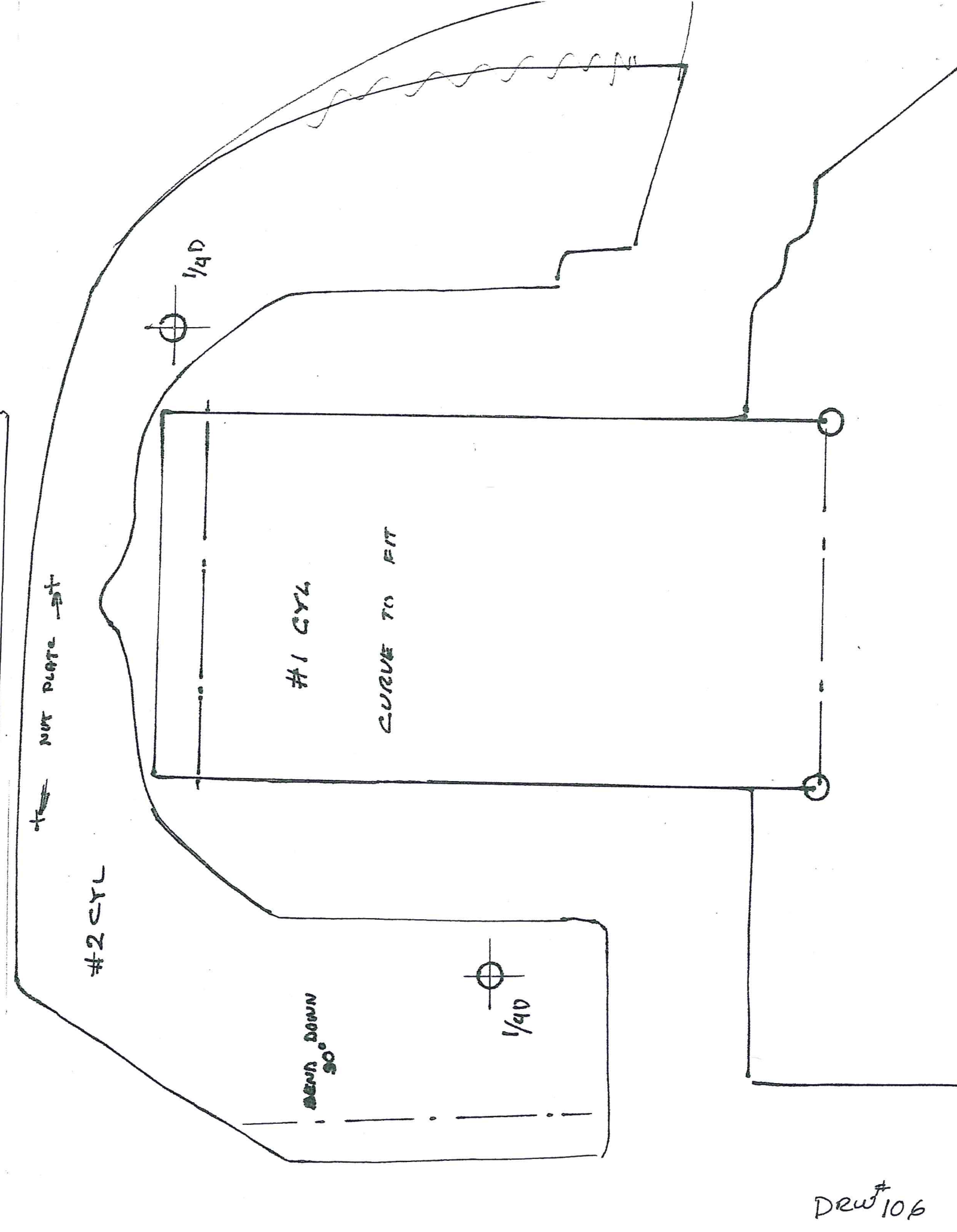
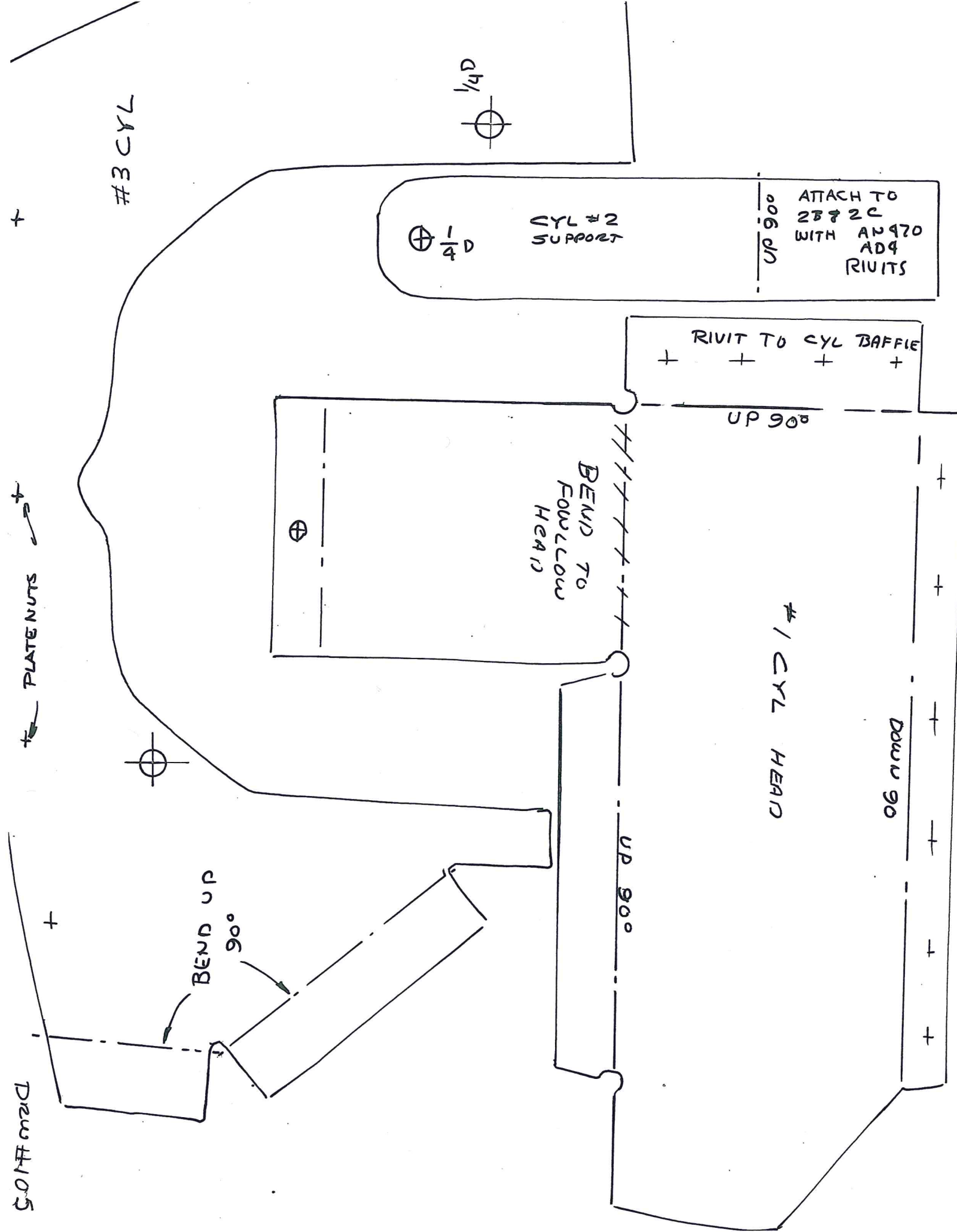


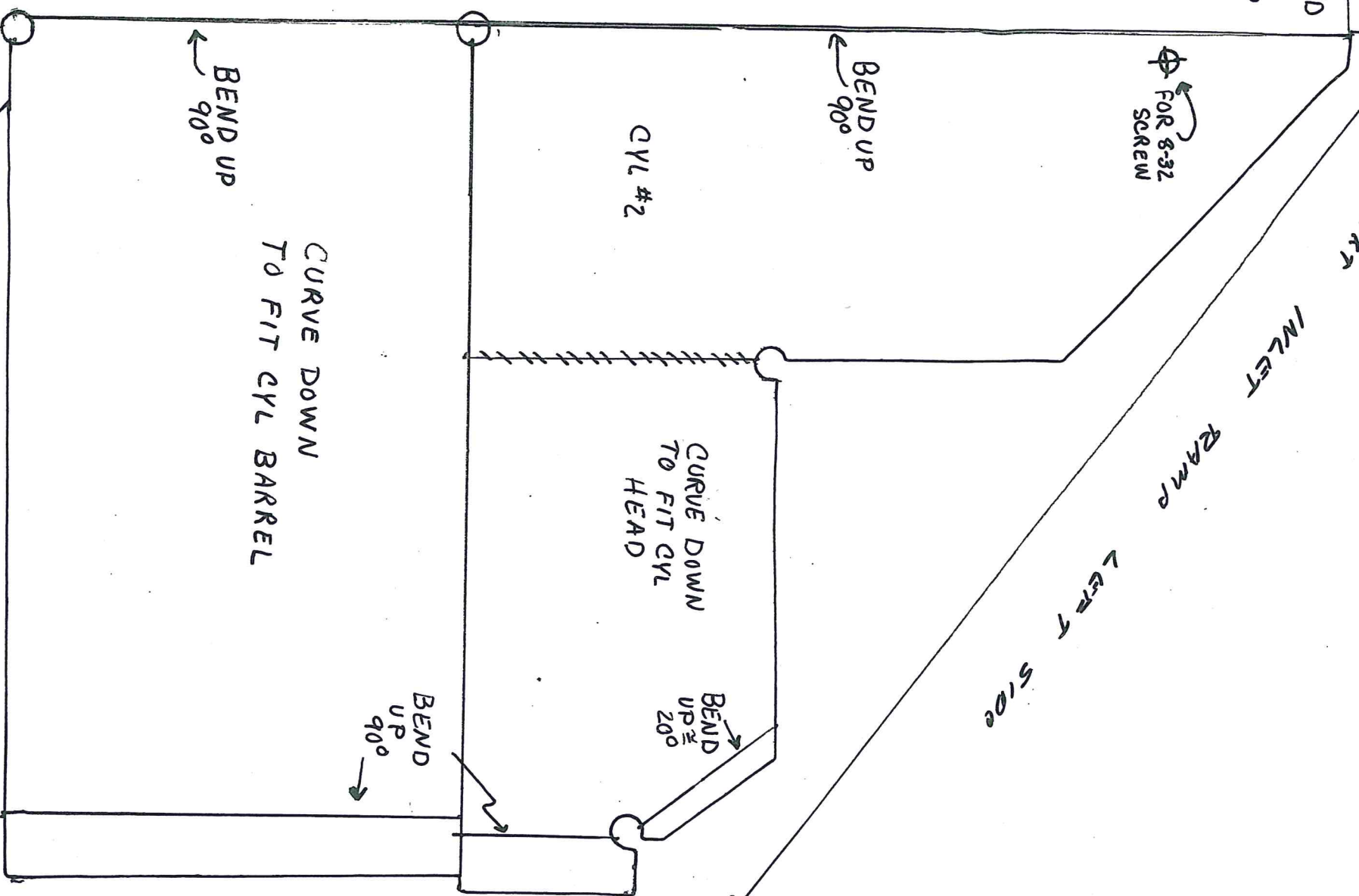
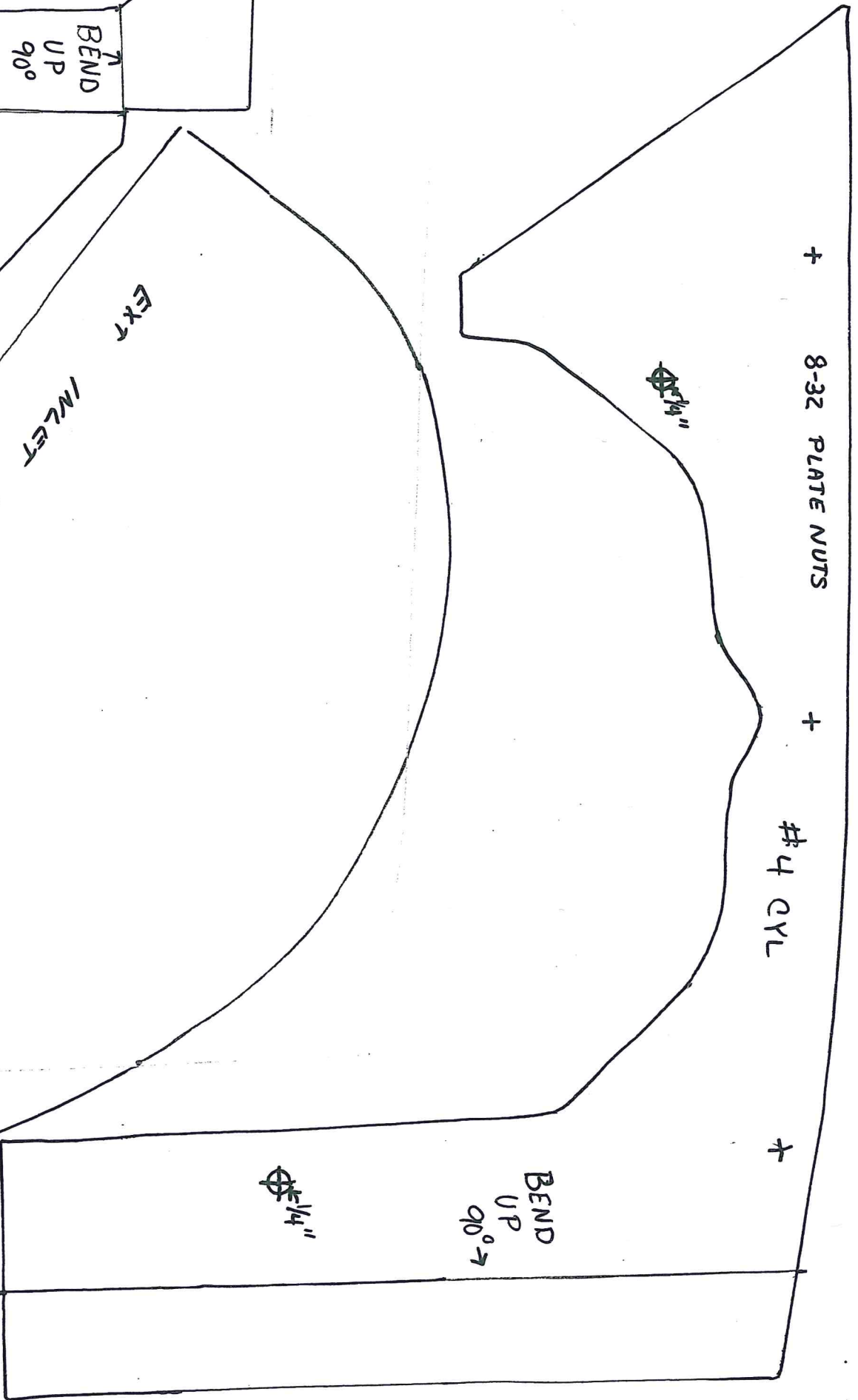
CENTER SUPPORT
 +
 8-32 PLATE NUTS
 +
 #4 CYL. REAR
 +



Draw #105



Draw #106



FOR 8-32 SCREW

BEND UP 90°

BEND UP 90°

BEND UP 90°

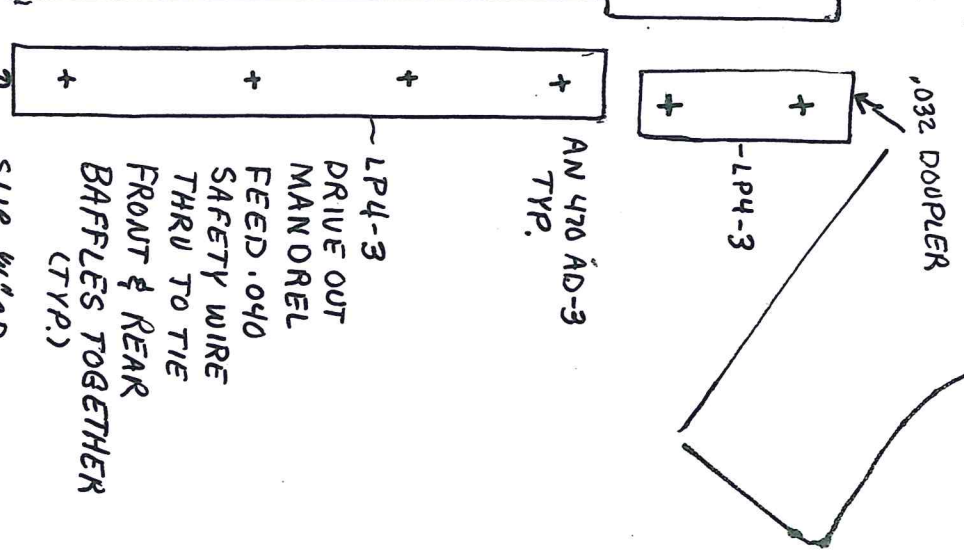
CYL #2

CURVE DOWN TO FIT CYL BARREL

CURVE DOWN TO FIT CYL HEAD

BEND UP 20°

BEND UP 90°



.032 DOUPLER

-LP4-3

AN 470 AD-3 TYP.

LP4-3
DRIVE OUT
MANDREL
FEED .040
SAFETY WIRE
THRU TO TIE
FRONT & REAR
BAFFLES TOGETHER
(TYP.)

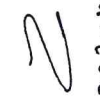
.032 DOUPLER
SLIP 1/4" OD NYLON TUBING OVER .040 WIRE TO PREVENT CHAFING

NOTE THE LENGTH OF THIS BAFFLE IS TYPICAL OF THE OTHERS. CUT THEM LONG, THEN TRIM SO THAT THE GAP BETWEEN INTER CYL. BAFFLE AND OUTSIDE BAFFLES IS 1" AT THE CYL. BARREL AND 2 1/4" AT THE NYLON HEAD

RIVET SUPPORT HERE

1/8 D
CLECO
INDEX

DOWN DRILL
TILE YOU
FIT TO
CHAMBER



BEND UP 90°

CURVE TO MATCH
CYLINDER FINS.

BEND DOWN 90°

INBD. UP - FWD FACE
LEFT BACIE OUTER BULKHEAD
MAT. 040

MT COOLER ON THIS

BULKHEAD

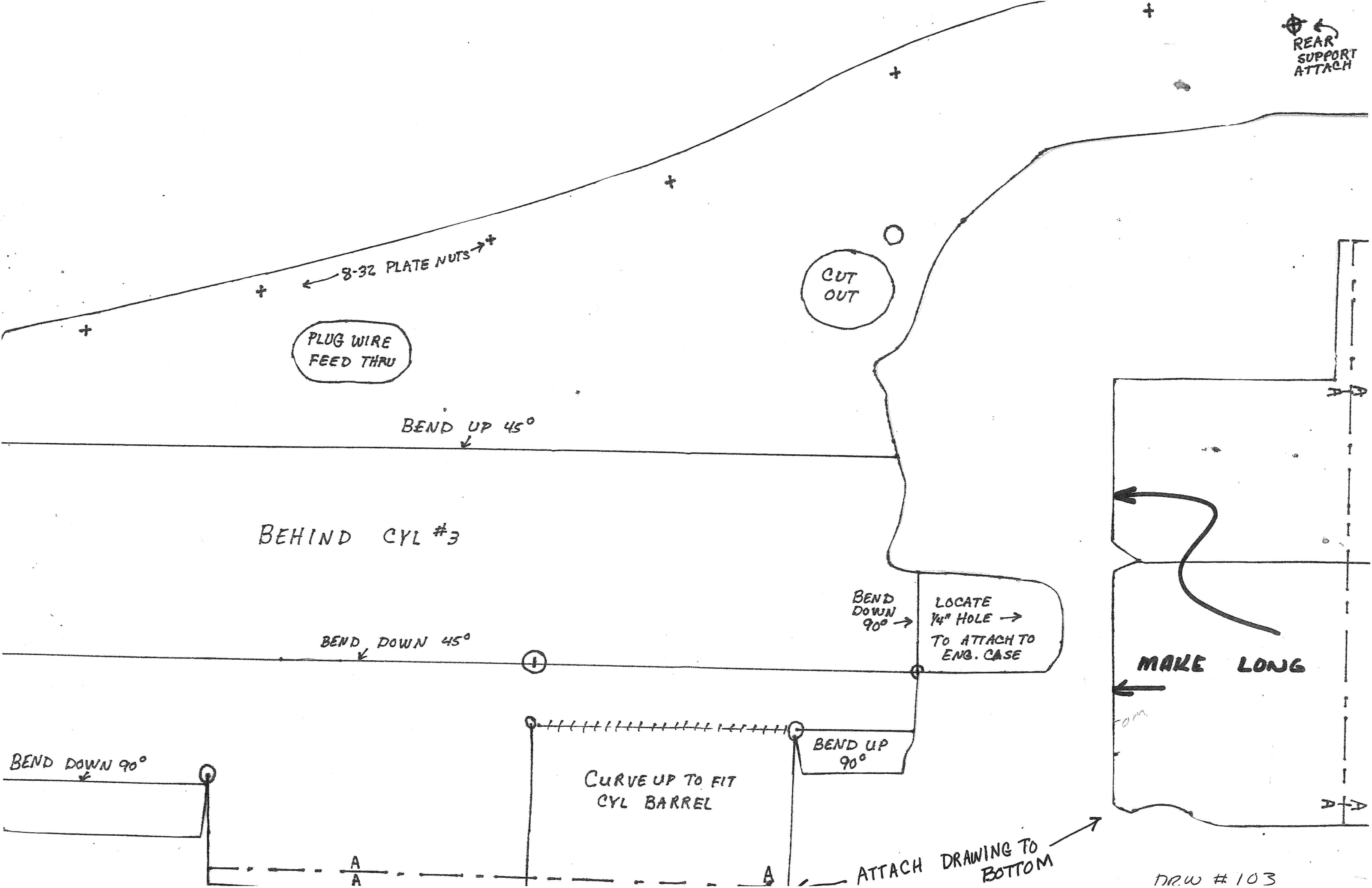


0320

BEND UP 90°

DRW # 101

REAR SUPPORT ATTACH



PLUG WIRE FEED THRU

8-32 PLATE NUTS

CUT OUT

BEND UP 45°

BEHIND CYL #3

BEND DOWN 45°

BEND DOWN 90°

LOCATE 1/4" HOLE TO ATTACH TO ENG. CASE

BEND UP 90°

CURVE UP TO FIT CYL BARREL

BEND DOWN 90°

ATTACH DRAWING TO BOTTOM

MAKE LONG

DRW # 103