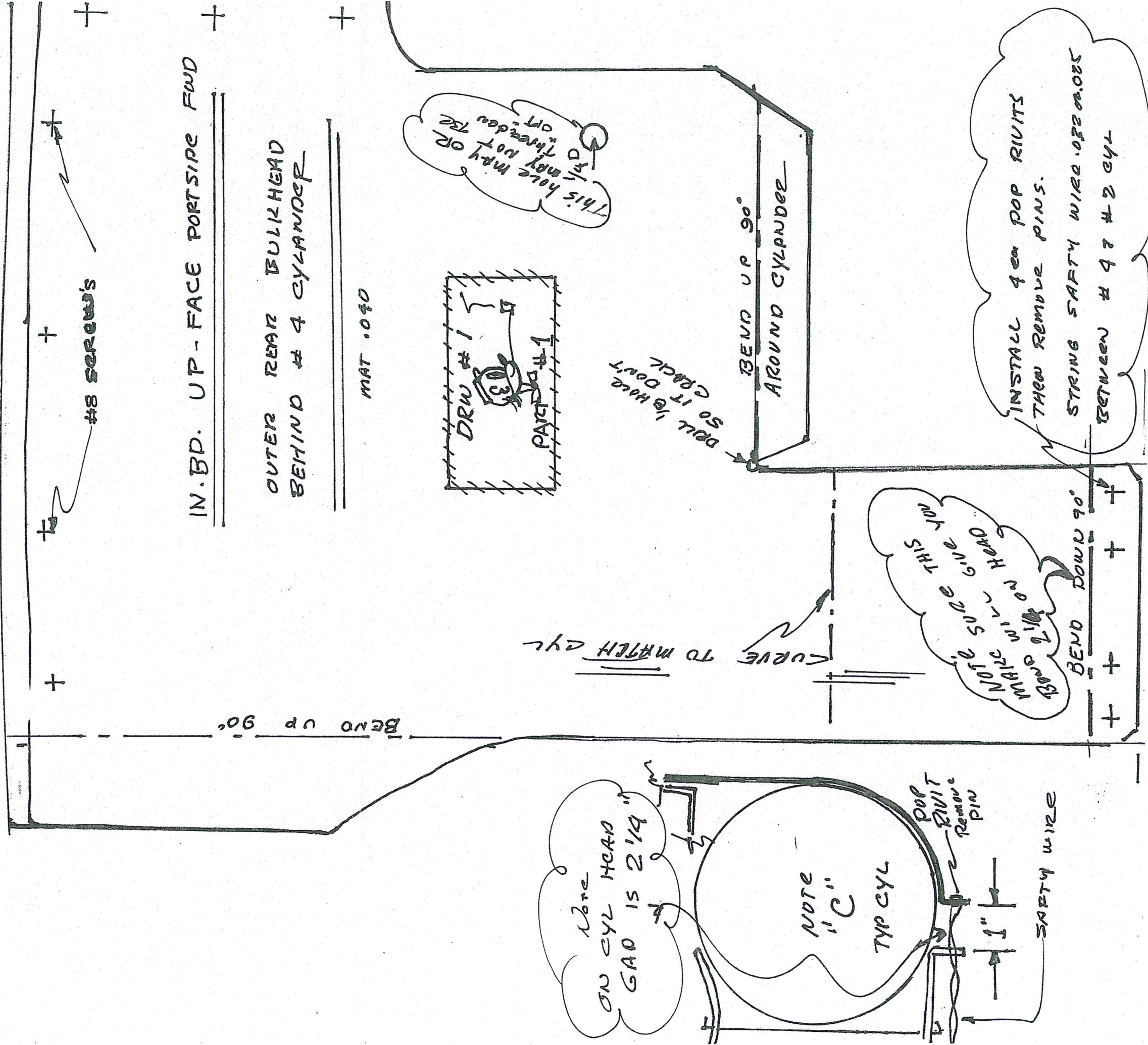
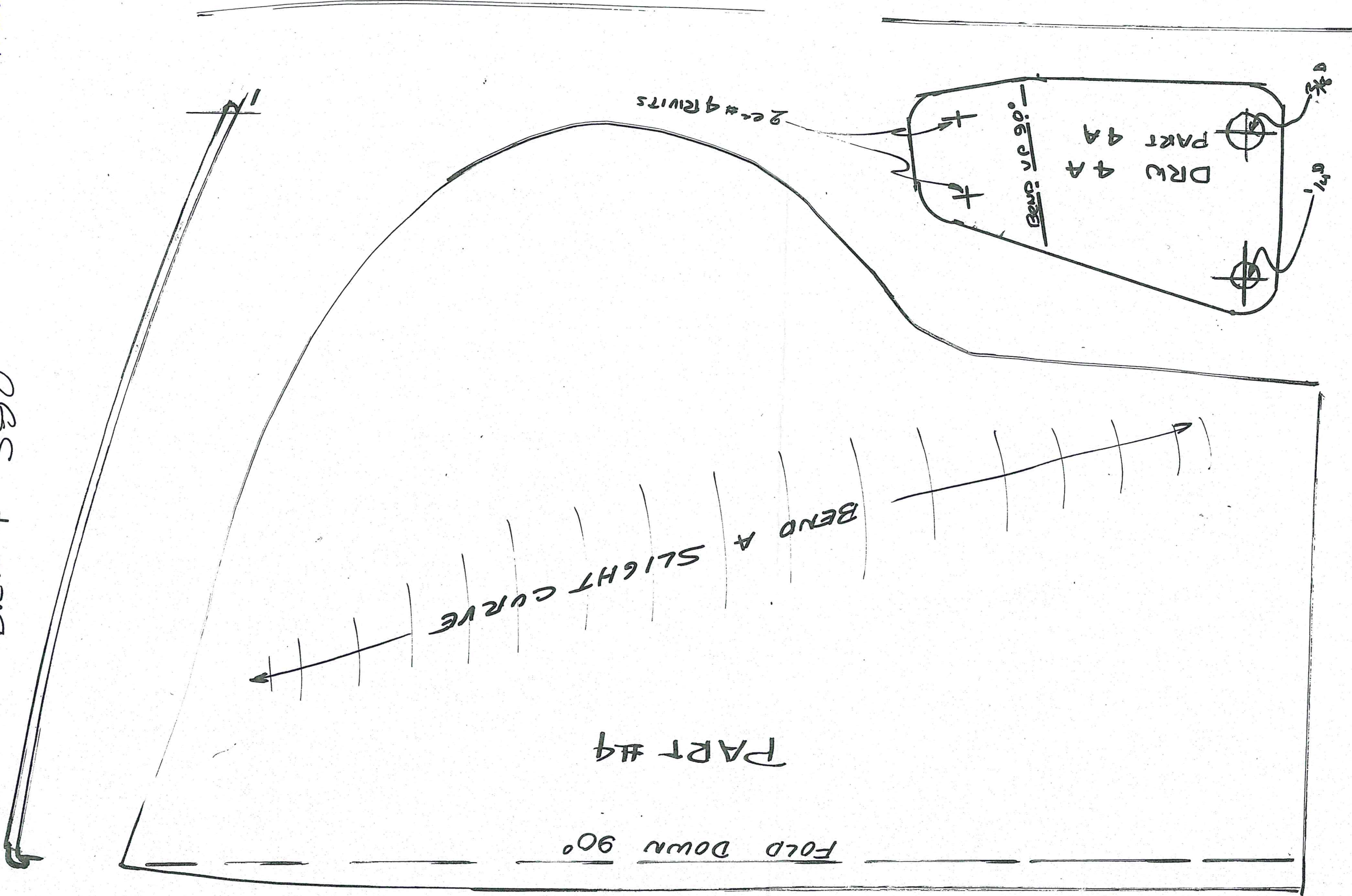


DRW # 1 - 390



DRW 4 390



DRW #4

FOLD DOWN 90°

PART #4

BEND A SLIGHT CURVE

BEND UP 90°

2 ea #4 RIVETS

DRW 4 A  
PART 4 A

Ø 1/2"

Ø 3/8"

DRW #2 (390)

#8 SCREWS TO PART #1

(PLUG PASS  
THROUGH)

USE SILICONE SEALER  
THIS AREA TO BLOCK

1/4" HOLE  
BOLT TO CASE

BEND UP 90°

1/16" HOLE

DRW #2  
PART #2

BEND UP 90°

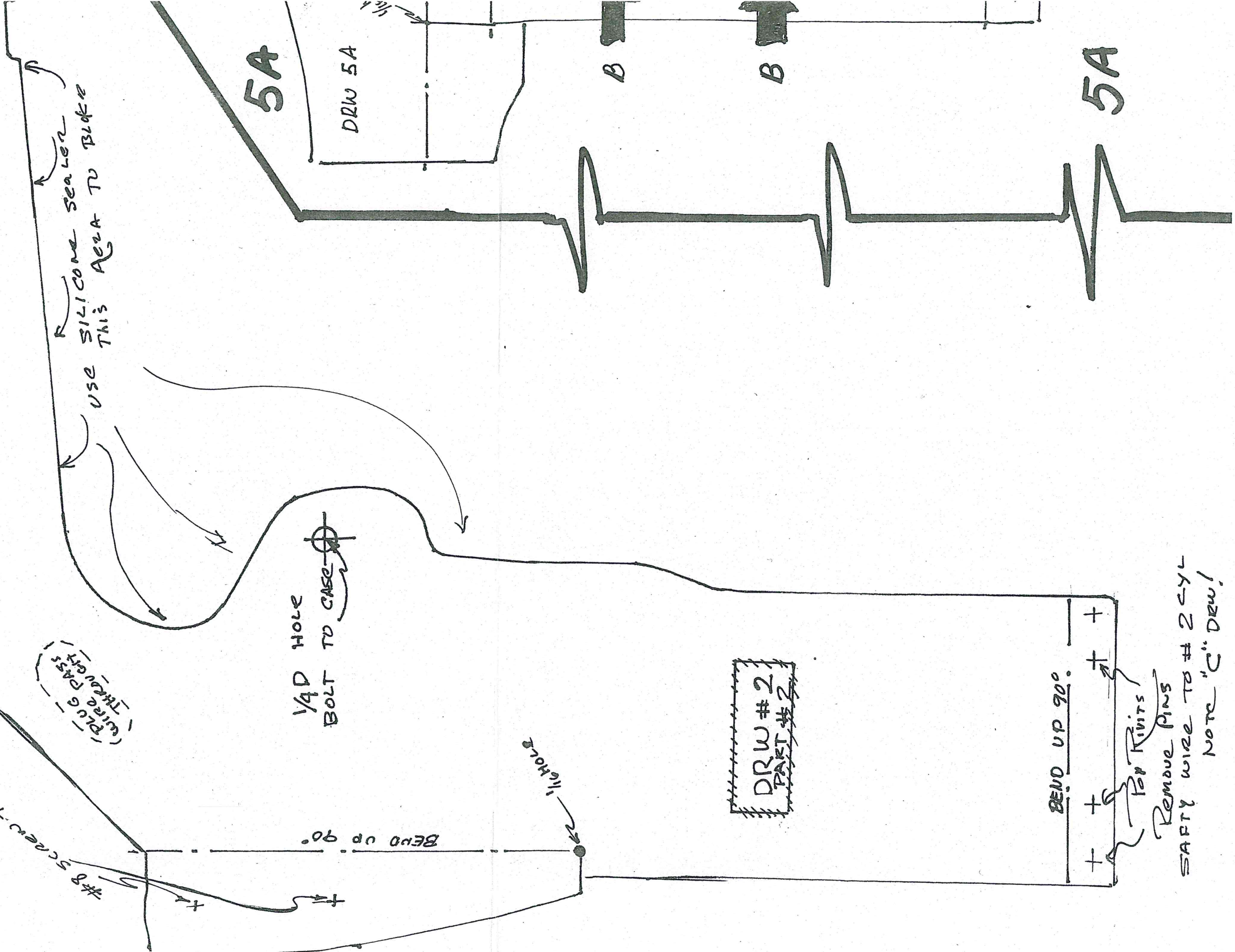
+ + + + +

FOR RIVETS

REMOVE PINS

SARTY WIRE TO #2 SYL

NOTE "C" DRW!



5A

DRW 5A

B

B

5A

# Draw's 390

PART 5  
DRW # 5



5

B

B

#8 POP RIVETS 4ea  
Remove pins

DRW # 3A 390

DRAWING # 3A  
PART # 3

CUT  
B

CUT TO FIT BLOCK

12 3/8"

CUT  
A

CUT LONG FIT  
THEN CUT AND BEND

BEND UP

BEND UP

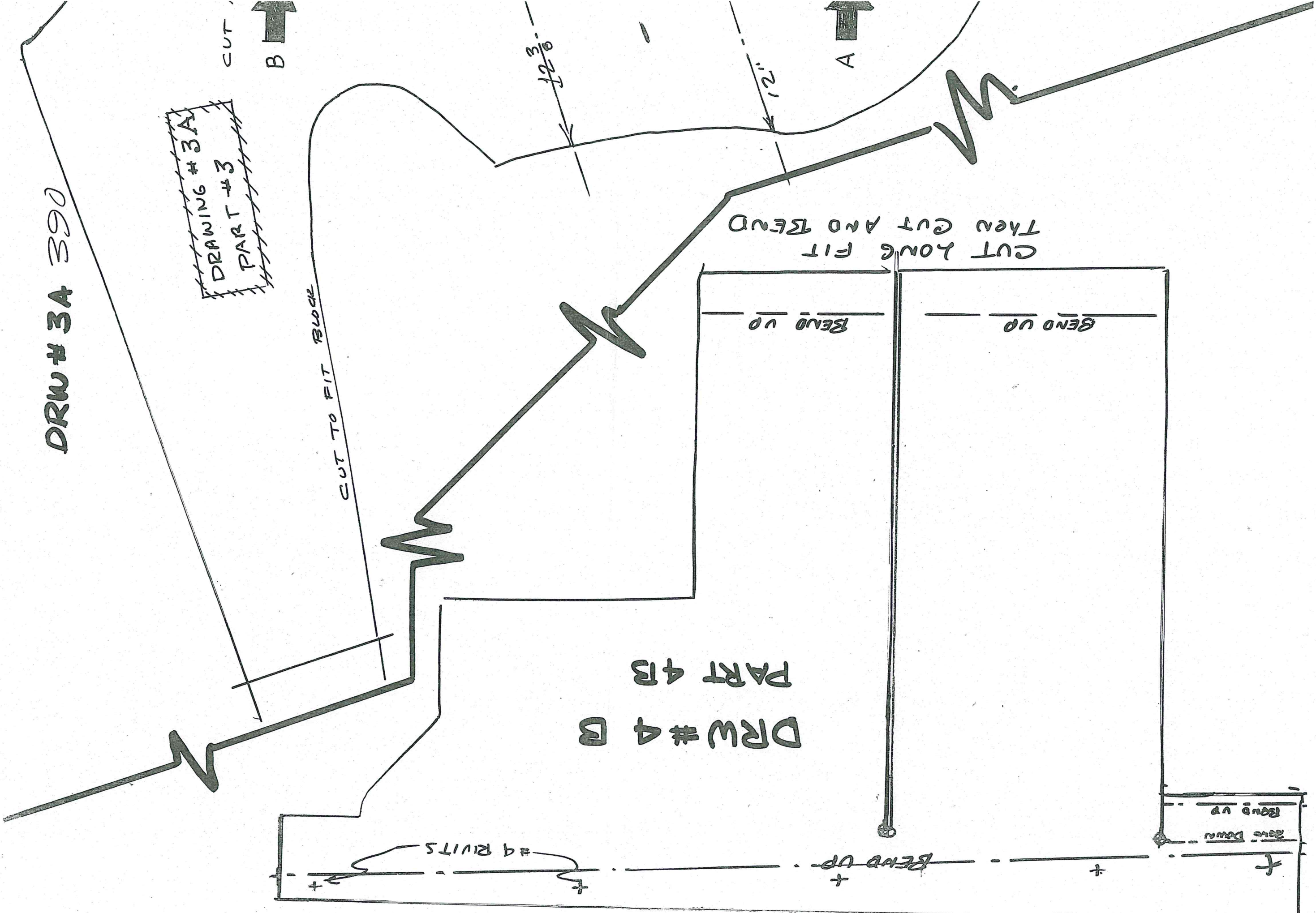
DRW # 4 B  
PART 4 B

# 4 RIVETS

BEND UP

BEND UP

MOVE DOWN



DRW #3 390

D TAPE TOGETHER



DRW #3  
PART #3

BEND DOWN 45°

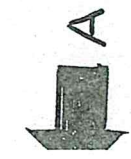
BEND UP 45°

12"

12 3/8"

1 1/2"

1 3/4"



BEND AROUND  
CYL. AIR GAP 1"

BEND UP 90°

3 3/8"

BEND AROUND  
CYL. HEAD GAP 2 1/4"

BEND UP 90°

DRILL 1/16  
HOLE TO PREVENT  
CRACK

